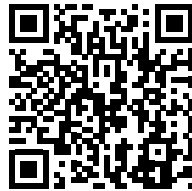
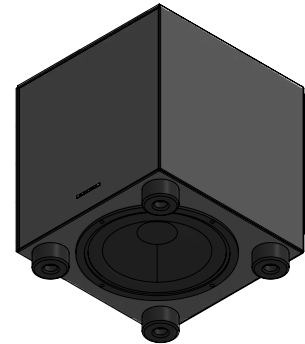
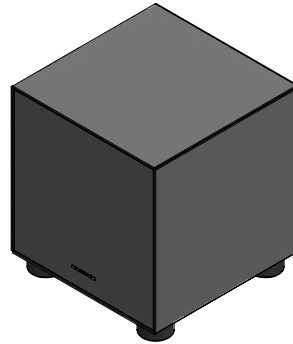
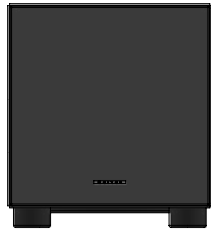




CORO™ COLLECTION



**SCAN OR CLICK TO EXTEND
YOUR GARVAN WARRANTY FOR FREE!**

3 years included, with the option to add
2 extra years at no additional cost.

OVERVIEW DESCRIPTION – UNIQUE DESCRIPTION PRODUCT

The Garvan WA216 is a compact indoor subwoofer from the Coro™ Collection, designed for free-standing installations in residential and commercial spaces. Featuring a 130 mm woofer combined with a 160 mm passive radiator, it delivers deep, controlled bass to complement full-range loudspeakers. Its elegant cabinet, available in standard black painted metal, custom RAL/NCS finishes, or galvanic effects, ensures seamless integration into any environment. With its balance of performance, design, and flexibility, the WA216 is ideal for enhancing home audio systems, hospitality venues, and wellness spaces.

KEY FEATURES

Indoor subwoofer with 1 × 130 mm woofer + 1 × 160 mm passive radiator

Power handling: 60 + 60 W AES / 120 + 120 W continuous

Sensitivity: 84 dB (2.83V/1m and 1W/1m)

Maximum SPL: 117 dB @ 1 m

Frequency response: 41 Hz – 1 kHz (–3 dB)

Extended range: 35 Hz – 1 kHz (–10 dB)

Cabinet options: black painted metal (custom RAL/NCS finishes or galvanic effects available)

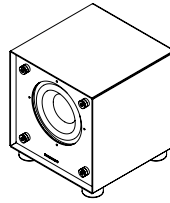
Grille options: lacquered or galvanic metal, brushed stainless steel

Installation: free-standing design for easy integration

Connectivity: Phoenix connectors, accepts 18 AWG to 11 AWG cables

Weight: 6.02 kg (net) / 4.74 kg (variant WA216-P)

Extended warranty: 3+1+1 years with free registration



NAME INSTALLATION	Subwoofer
Type Installation	Free Standing
Surface Compatibility	
Installation Requirements:	
SINGLE LOUDSPEAKER PERFORMANCE	
AES Power Handling	120 W
Continuous Power Handling ***	240 W
Sensitivity 2,83V / 1m ****	84 dB
Sensitivity 1W/1m ****	84 dB
Calculated Maximum SPL @ 1m*	117 dB
TRANSDUCER	
Type	Subwoofer
Nominal size	1x WF 130mm + 1x PR 160mm
Nominal Impedance	8Ω
Loudspeaker EQ	Not required, Garvan Preset EQ, Filter and protection available
Recommended High-Pass Filter Protection	40Hz with 48 dB/Oct. High pass Filter
Frequency Response (-3 dB)	41 Hz – 1KHz
Frequency Range (-10 dB)	35 Hz – 1KHz
PHYSICAL	
Cabinet / support Material	Standard black painted metal cabinet or custom painted on RAL or NCS scale or galvanic effects
Cover	"Lacquered or galvanic metal Grille. Brushed stainless steel Grille.
ENVIRONMENTAL FEATURES	
Environment of Use	Indoor environments
Operating Temperature Range *****	
Connectors	Phoenix connector. Accepts 18 AWG (0.8 mm ²) to 11 AWG (4,17 mm ²) size wire.
Product Dimensions	
Ceiling Cutout	
Net Weight	
LOGISTICAL DATA	
Packaging dimensions	
Shipping Weight	
Quantity of products per package	1
MAINTENANCE	
Cleaning Method	microfiber cloth
General precautions	do not use harsh cleaning products

INCLUDED ACCESSORIES			
-----------------------------	--	--	--

--	--	--	--

OPTIONAL ACCESSORIES			
-----------------------------	--	--	--

Transformer for high line voltage	TRT052 – 70/100V - 25/37/50W		
-----------------------------------	------------------------------	--	--

Transformer for high line voltage	TRT054 – 70/100V - 10/15/20W		
-----------------------------------	------------------------------	--	--

Cover installation kit	GAR136		
------------------------	--------	--	--

Cable size/load	8 ohm	4 ohm	2 ohm
2 sq mm.	20m / 65ft.	10m / 32ft	5m / 16ft
2,5 sq mm.	30m / 100ft.	15m / 50ft	7,5m / 25ft
4 sq mm.	60m / 200ft.	30m / 100ft	15m / 50ft

NOTES:			
---------------	--	--	--

* Maximum SPL calculated from sensitivity and power handling specifications, using a signal with crest factor 4 (12dB), exclusive of power compression.

** With dedicated preset

*** Power on Continuous Program is defined as 3 dB greater than the Nominal rating.

**** average SPL measured from 200 Hz to 1,5 kHz

***** With dedicated ignition and maintenance process

SUBWOOFER CODES

1 Loudspeaker **WA216**

AES POWER **60 + 60 W**
 TYPE **SUBWOOFER**
 NOM. SIZE **1X WF 130mm + 1X PR 160mm**
 NOM. IMP. **4+4 Ω**

